



DAMEN FAST CREW SUPPLIER® 1204 SORA -5

GENERAL

HULL MATERIAL	Aluminum
BUILD	2012
SUPERSTRUCTURE	FRP
BASIC FUNCTIONS	Crew and Pilot duties
CLASSIFICATION	Bureau Veritas 1 * Hull • MACH Light Ship/Fast Utility Vessel Sea Area 2

DIMENSIONS

LENGTH O.A.	12.56 m
BEAM O.A.	3.85 m
DEPTH AT SIDES	1.67 m
DRAUGHT MAX	0.80 m

CAPACITIES

FUEL OIL	0.87 m ³
FRESH WATER	0.08 m ³
SEWAGE	0.03 m ³
MAX. DECK LOAD	0.50 t
CREW	2 persons
INDUSTRIAL PERSONNEL	Up to 12 persons

PERFORMANCES

SPEED	21 knots
RANGE	150 nm. at max. speed

PROPULSION SYSTEM

MAIN ENGINES	2x Caterpillar C7
TOTAL POWER	470 bkW
GEARBOXES	ZF 286
PROPULSION	2x Ultra jet 340

ELECTRICAL EQUIPMENT

NETWORK	24V d.c.; 230V 50 Hz
GENERATOR SETS	1x Onan 4.0 MDKBM 1x 4.0 kW, 5.0 kVA

DECK LAY-OUT

ANCHOR EQUIPMENT	1x 20 kg HHP with chain and line
FENDERING	230 mm x 115 mm D-shaped foam filled fender

LIFE SAVING EQUIPMENT

LIFE BUOYS	2
LIFE JACKETS	Based on number of persons on board
LIFE RAFTS	1x 16 persons
FIRE EXTINGUISHING	Hand operated fire extinguishers. Fixed Fi-Fi system in engine room (Novec 1230)

AUXILIARY EQUIPMENT

ENGINE ROOM VENTILATION	2x 1500 m ³ /h
GENERAL SERVICE PUMPS	Electrically driven, 24V, Azcue CA 40
CATHODIC PROTECTION	

ACCOMODATION

BELOW MAIN DECK	Pantry, toilet & 2 bunks
MAIN DECK	12 Seats
AIR-CONDITIONING	24,000 BTU

NAUTICAL, SURVEILLANCE AND COMMUNICATION EQUIPMENT

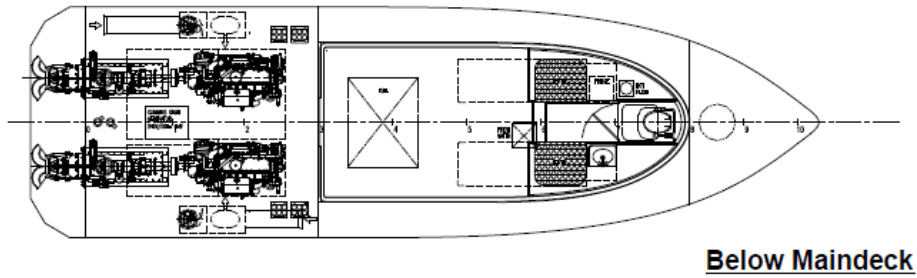
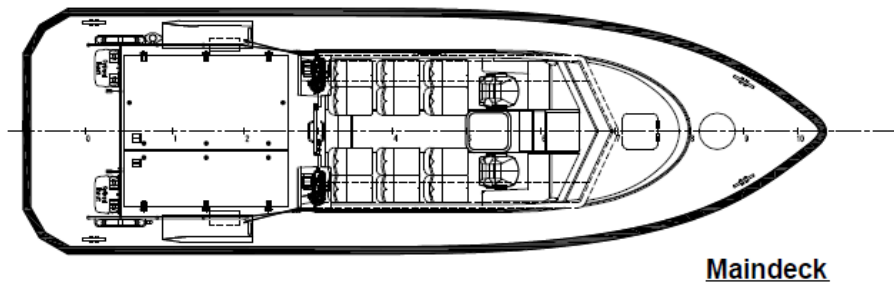
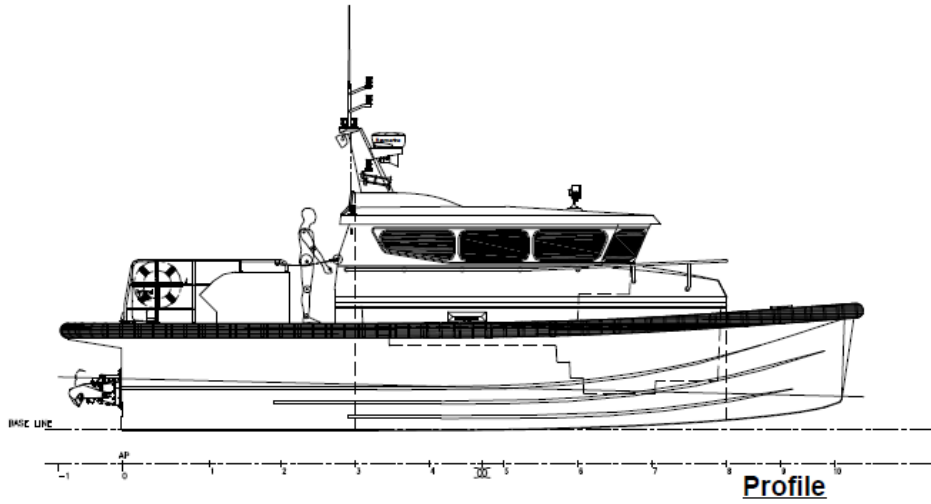
SEARCHLIGHT	1x 250W 24V
COMPASS	Magnetic
ECHO SOUNDER	
RADAR	
GPS/	
AIS	
VHF	
VHF HANDHELD	
NAVTEX	

Sora Marine Services WLL

P.O. Box 22896, Doha, Qatar / T: +9744427177 / F: +974 4427 7117 /

info@soramarine.com / www.soramarine.com





DAMEN FAST CREW SUPPLIER® 1204
"FCS 1204"

Sora Marine Services WLL
P.O. Box 22896, Doha, Qatar / T: +9744427177 / F: +974 4427 7117 /
info@soramarine.com / www.soramarine.com

